

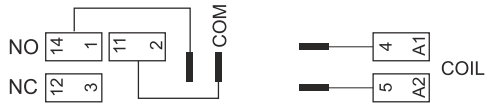


S1D-A

Only
14 mm
WIDE

**Input / Output Socket [10A] for
P1 NO Relays DIN Rail or Panel Mountable**

Wiring Diagram



Specifications

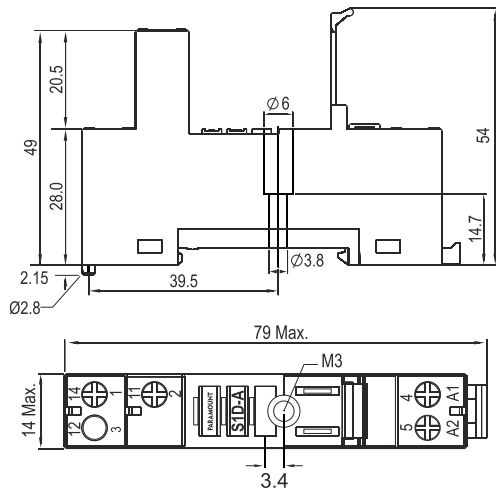
Poles: 1 Normally Open Contact
Nominal load: 10A / 250V

Insulation: Di-electric strength, 1minute
Between contact and coil: 5 KV
Between all terminals and DIN Rail: 5 KV
Between adjacent terminals: 3 KV

Brass Tin Plated Screw
Max. screw torque: 1.2 Nm
Screw dimensions: M3, Pozi

Wire in-lets capacity:
Solid Wire: 4 mm² or 2 x 2.25 mm²
Multi core: 22 14 AWG
Ferrule tip terminals: 4 mm²

Dimensions in mm.



Other Aspects

Weight Approx.: 28 gms
DIN Rail / Panel Mountable
Integrated Relay Hold Down Clip
Removable White Marking Label
EN / DIN Sequential Numbering according to EN 60947 & IEC 61810

Accessories

S1D-B1



S1D-B4



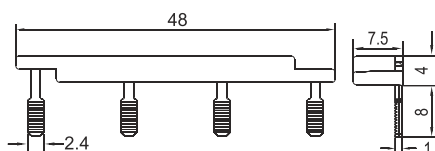
Accessories

Bridge Bar S1D-B1 & S1D-B4 for Coil Terminal (A2 / 5)

Dimensions in mm.



S1D-B1, 10A @ 250 VAC, 1 Way Bridge for Coil



S1D-B4, 10A @ 250 VAC, 4 Way Bridge for Coil

Approvals

